

FEATURES



AEB Safety[#]



Smartphone Connectivity[^]



Smart Cruise Control[#]
(Sport+ & GT)**~



Reverse Camera &
Front and Rear Parking Sensors



Lane Keeping Assist[#]



Rear Cross Traffic Alert
(Sport+ & GT)**##



Blind Spot Detection
(Sport+ & GT)**###



Smart Boot (auto release)
(Sport+ Sedan & GT Sedan)



7 Speed Dual Clutch Transmission
(Automatic) (GT)

Exterior Colours



Aurora Black (ABP)*



Gravity Blue (B4U)*



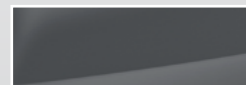
Horizon Blue (BBL)*



Runway Red (CR5)*



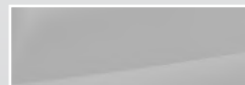
Sunset Orange (DRG)*



Steel Grey (KLG)*



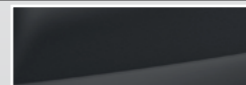
Clear White (UD)



Snow White Pearl (SWP)*



Silky Silver (4SS)*



Platinum Graphite (ABT)*

Interior Colours



Black Cloth seats
(S & Sport)



Black Leather Appointed[^] seats
(Sport+)



Sports Leather Appointed[^] Seats
(GT)



112KW 2.0L MPI Petrol
(S, Sport, Sport+)

Wheels



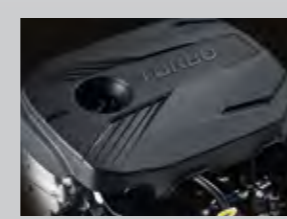
16" Steel Wheel
(S)



17" Alloy Wheel
(Sport & Sport+)



18" Alloy Wheel
(GT)



150KW 1.6L T-GDI Petrol
(GT)

[^]Leather appointed seats may comprise of genuine leather, polyurethane and other man-made materials or a combination thereof. [#]Safety technologies are supplemental systems and do not replace the need for the driver to exercise care and attention. For full terms and conditions on Kia's 7 Year warranty, visit kia.com.au. *Premium paint at additional cost. [^]With compatible smartphone. **Optional with S & Sport Safety Pack. [~]Optional on S & Sport Automatic only. ^{##}Blind Spot Detection and Rear Cross Traffic Alert technologies standard on Sport+ model from October 2018 production.



Kia Motors Australia Pty Ltd ABN 97 110 483 353
Locked Bag 2207, North Ryde BC NSW 1670
Phone 131 KIA (131 542)
kia.com.au



Kia. Driving Australian Sport.

KMAU4755 Part Number: MSHBD201906. Printing date: July 2019

GET MEAN



The Power to Surprise

CERATO MODEL YEAR 2020

CERATO MY 2020 Mechanical & Feature List

Engine	2.0L MPI Petrol	1.6L T-GDI Petrol
Engine type	In-line 4 cyl. DOHC MPI ¹ D-CVVT ² 16 valve	In-line 4cyl. DOHC T-GDI ³ D-CVVT ² 16 valve
Capacity (cc)	1,999	1,591
Max power (kw @ rpm)	112 @ 6,200	150 @ 6,000
Max torque (Nm @ rpm)	192 @ 4,000	265 @ 1,500-4,500
Bore x stroke (mm)	81.0 x 97.0	77.0 x 85.4
Compression ratio	10.3 : 1	10.0 : 1
Model Variants	S, Sport, Sport+	GT Only

Fuel	2.0L MPI Petrol M/T	2.0L MPI Petrol A/T	1.6L T-GDI Petrol DCT
Fuel consumption (L/100km) - Combined*	7.6 / 7.4	7.4 / 7.4	6.8 / 6.8
Fuel consumption (L/100km) - Urban*	10.5 / 10.0	10.2 / 10.2	8.9 / 8.9
Fuel consumption (L/100km) - Extra-urban*	5.9 / 5.9	5.7 / 5.7	5.5 / 5.5
CO ₂ emission (g/km) - Combined	174 / 173	167 / 167	158 / 158
CO ₂ emission (g/km) - Urban	240 / 235	231 / 231	209 / 209
CO ₂ emission (g/km) - Extra-urban	135 / 137	130 / 130	128 / 128
EURO emission compliant	5		
Hood insulator	•		
Fuel type recommended	Regular Unleaded**		
Fuel tank capacity (L)	50		
Weight (4 Door Sedan / 5 Door Hatch)			
Tare weight (kg)	1,295 / 1,320	1,320 / 1,345	1,370 / 1,395
Towing capacity unbraked (kg)	610 / 610	610 / 610	610 / 610
Towing capacity braked (kg)	1,200 / 1,200	1,100 / 1,100	1,100 / 1,100

Transmission	S	Sport	Sport +	GT
6 Speed Manual	•	•	-	-
6 Speed Automatic	•	•	•	-
7 Speed Dual Clutch	-	-	-	•
Dimensions (4 Door Sedan / 5 Door Hatch)				
Overall length (mm)	4,640 / 4,510	4,640 / 4,510	4,640 / 4,510	4,640 / 4,510
Overall width (mm)	1,800 / 1,800	1,800 / 1,800	1,800 / 1,800	1,800 / 1,800
Overall height (mm)	1,440 / 1,445	1,440 / 1,445	1,440 / 1,445	1,435 / 1,440
Wheelbase (mm)	2,700 / 2,700	2,700 / 2,700	2,700 / 2,700	2,700 / 2,700
Minimum ground clearance (mm)	140 / 140	140 / 140	140 / 140	135 / 135
Luggage space (L, VDA)	502 / 428	502 / 428	502 / 428	502 / 428
Luggage space (L, SAE)	434 / 741	434 / 741	434 / 741	434 / 741
Towing Capacity^^ (4 Door Sedan / 5 Door Hatch)				
Towing capacity unbraked (kg)	610 / 610	610 / 610	610 / 610	610 / 610
Towing capacity braked (kg) (M/T)	1,200 / 1,200	1,200 / 1,200	-	-
Towing capacity braked (kg) (A/T and DCT)	1,100 / 1,100	1,100 / 1,100	1,100 / 1,100	1,100 / 1,100

Steering, Brakes & Suspension	S, Sport & Sport +			GT
Power steering system	MDPS ⁴ (Electric power steering)			
DMS ⁵ system (4 modes - Comfort, Eco, Smart, Sport)	A/T & DCT only			
Sports Tuned Suspension & Steering	-			•
Energy absorbing steering column				•
Tilt & telescopic adjustable steering column				•
Minimum turning circle (m)	10.6			
Front brakes	280mm ventilated disc		305mm ventilated disc	
Rear brakes	262mm solid disc		262mm solid disc	
Front suspension	McPherson strut		McPherson Strut	
Rear suspension	Coupled torsion beam axle		Multi-link	

Wheels & Tyres	S	Sport	Sport +	GT
Wheel type & size	16" Steel	17" Alloy	17" Alloy	18" Alloy
Tyres	205/55 R16	225/45 R17	225/45 R17	225/40Z R18 Michelin Pilot Sport 4
TPMS (Tyre Pressure Monitoring System)	•	•	•	•
Spare wheel type	Temporary Steel			

Safety				
Active Safety				
ABS (Anti-lock Braking System) with EBD ⁶ & BA ⁷	•	•	•	•
ESC (Electronic Stability Control) with TCS ⁸	•	•	•	•
VSM (Vehicle Stability Management)	•	•	•	•
HAC (Hill-start Assist Control)	•	•	•	•
ESS (Emergency Stop Signal)	•	•	•	•
Seatbelt warning chime & light on all positions	•	•	•	•

Safety	S	Sport	Sport +	GT
Active Safety				
Front and Reverse Parking Sensors with parking sensor dash display	•	•	•	•
Rear view camera with in-audio display & dynamic parking guidelines	•	•	•	•
Electrochromic rear view mirror (auto dimming)	-	-	•	•
BSD (Blind Spot Detection)**	o	o	•	•
RCTA (Rear Cross Traffic Alert)**	o	o	•	•
LKA (Lane Keep Assist)	•	•	•	•
DAA (Driver Attention Alert)	•	•	•	•
AEB (Autonomous Emergency Brake) with FCWS (Forward Collision Warning System)*- Car Avoidance	•	•	•	•
AEB (Autonomous Emergency Brake) with FCWS (Forward Collision Warning System)*- Pedestrian & Cyclist Avoidance	o	o	•	•
Speed Limiter	•	•	•	•
Halogen daytime running light (DRL)	•	•	-	-
LED daytime running light (DRL)	-	-	•	•
LED Headlights with LED Rear Combination Lamp	-	-	-	•
Dusk-sensing automatic headlights	•	•	•	•
Rear fog light	•	•	•	•
Door open warning on driver display	•	•	•	•
Speed sensing auto door lock	•	•	•	•
Child restraint anchorage points (3 anchors + 2 ISOFIX positions)	•	•	•	•
3-point ELR seatbelts on all positions	•	•	•	•

Passive Safety				
Driver & front passenger SRS airbags	•	•	•	•
Front Side SRS airbags	•	•	•	•
Curtain SRS airbags	•	•	•	•
Front seatbelt pretensioners with load limiters	•	•	•	•
Side door impact beams (front & rear)	•	•	•	•
Childproof rear door locks	•	•	•	•
Impact-sensing auto door unlocking	•	•	•	•

Security				
Anti-theft immobiliser	•	•	•	•
Remote central locking with keyless entry & tailgate release	•	•	•	•
Folding key	•	•	-	-
Smart key with push button start	-	-	•	•
Burglar alarm with security indicator	•	•	•	•
Headlight escort function	•	•	•	•
Remote fuel lid release	•	•	•	•

Seating	S	Sport	Sport +	GT
Seat capacity	5	5	5	5
Cloth trim seats (Basic Pattern)	•	-	-	-
Cloth trim seats (Sport Pattern)	-	•	-	-
Leather appointed ¹ seats	-	-	•	-
Sports leather appointed ¹ seats	-	-	-	•
6-way driver's seat incl. height adjust	•	•	•	-
8-way power driver's seat with 2-way lumbar support	-	-	-	•
IMS ⁹ driver's seat with 2 seating position memory & easy access function	-	-	-	•
Front centre console armrest	•	•	-	-
Front centre console armrest sliding function	-	-	•	•
Split fold rear seats (60-40)	•	•	•	•
Rear centre armrest	•	•	•	•
Height adjustable headrests (all seats)	•	•	•	•
Headrests with height adjust & tilt function (Front seats)	-	•	•	•
Height adjustable front seatbelts	•	•	•	•

Exterior Features	S	Sport	Sport +	GT
GT Body Kit	-	-	-	•
High gloss outside door mirrors	-	-	-	•
Electric outside door mirrors (heated)	•	•	•	•
Electric folding outside door mirrors with automatic folding function	o	o	•	•
Outside mirror mounted side indicators	•	•	•	•
Smart boot (auto release)	-	-	Sedan Only	Sedan Only
Dual Exhaust	-	-	-	•
Chrome tip Exhaust	•	•	•	•
Aero blade front wipers	-	•	•	•
Front wiper & washer (variable intermittent / 2-speed)	•	•	•	•
Rear wiper & washer (2-speed)	Hatch Only	Hatch Only	Hatch Only	Hatch Only

Interior Features	S	Sport	Sport +	GT
Cruise control with steering wheel mounted controls	•	•	-	-
Smart Cruise Control (SCC)* - A/T & DCT Only	o	o	•	•
Premium steering wheel & shift knob	o	•	•	-
Flat-bottom perforated leather [†] sports steering wheel	-	-	-	•
3.5" Mono-type TFT-LCD instrument cluster	•	•	•	-
4.2" TFT-LCD Supervision instrument cluster	-	-	-	•
Multi-function trip computer	•	•	•	•
User selectable options (Auto door lock/unlock, headlight escort, service interval, etc.)	•	•	•	•
Digital clock with ambient temperature display (in cluster)	•	•	•	•
Power windows (front & rear)	•	•	•	•
Driver's window auto up & down with safety function	•	•	•	•
Alloy Sports Pedal	-	-	-	•
Satin silver interior door handles	•	•	•	-
Brushed silver interior door handles	-	-	-	•
Soft-touch door trim material (Upper trim: front only)	-	-	•	•
Interior lights (front & rear) with delay out	•	•	•	•
Rear window defroster with timer	•	•	•	•
Wireless phone charging (Qi) ***	-	-	-	•
1 x 12 volt power outlets (front console)	•	•	•	•
2 x USB chargers (front console & inside console storage box)	•	•	•	•
Driver & passenger sunvisors with vanity mirrors	•	•	•	•
Illuminated vanity mirrors	-	•	•	•

Storage	S	Sport	Sport +	GT
4 x cup holders (front & rear)	•	•	•	•
4 x bottle holders (front & rear doors)	•	•	•	•
Map pockets in front doors	•	•	•	•
Accessory pockets in front & rear door armrest	•	•	•	•
Sunglass holder	•	•	•	•
Glovebox with illumination	-	-	•	•
Centre console storage	•	•	•	•
Seat back pocket (passenger side)	-	-	•	•
Coat hook (1 x rear side)	•	•	•	•
Under-floor storage box (cargo area)	Hatch Only	Hatch Only	Hatch Only	Hatch Only
Luggage net hooks (cargo area)	Hatch Only	Hatch Only	Hatch Only	Hatch Only
Parcel Shelf	Hatch Only	Hatch Only	Hatch Only	Hatch Only

Audio				
MP3 compatible audio player with AM/FM tuner and DAB digital radio	•	•	•	•
8" LCD touch screen	•	•	•	•
Apple CarPlay™ and Android Auto™ - with voice recognition	•	•	•	•
6 speakers (front door, rear door & front tweeters)	•	•	•	-
8 speakers JBL® premium sound system (front door, rear door, front tweeters, boot & centre speaker)	-	-	-	•
Satellite navigation multimedia system with traffic information (SUNA™)	-	•	•	•
AUX/USB input with iPod® compatibility (on selected iPod® models)	•	•	•	•
Bluetooth® functionality (phone/media stream) [†]	•	•	•	•
Steering wheel mounted audio/Bluetooth® controls	•	•	•	•
SDVC (Speed Dependent Volume Control)	•	•	•	•

Ventilation				
Manual air-conditioning	•	•	-	-
Dual-zone climate control air-conditioning	-	-	•	•
Auto defog system	-	-	•	•
Rear air vents	-	-	•	•
Ventilated Front Seats	-	-	-	•
Heated Front Seats	-	-	•	•

• Standard o Option (Safety pack S & Sport) - Not available

For full terms and conditions on Kia's 7 Year Warranty, visit www.kia.com.au. Kia Motors Australia ABN 97 110 483 353 Locked Bag 2207, North Ryde BC NSW 1670. Specifications apply to 2020 Model Year Cerato Sedan & Hatch. Kia Motors Australia reserves the right to discontinue or change the models, features, specifications, options, designs and prices of products referred to in this sheet without incurring any liability whatsoever to any purchaser or prospective purchaser of any such products. Some of the items herein are optional at additional cost. Consult your Kia dealer for the latest information on models, specifications, features, prices, options and availability. iPod® is a registered trademark of Apple Computer Inc., registered in the U.S. and other countries. SUNA™ is a registered trademark of Suna Traffic Channel. JBL® is a trademark of Harman International Industries, Incorporated. †Apple CarPlay™ connectivity requires compatible iOS device. See apple.com.au for more details. Android Auto™ connectivity requires compatible Android device. See android.com/int/en_au/ for more details. Apple CarPlay™ is a registered trademark of Apple Inc. Android Auto is a registered trademark of Google Inc. †Not all mobile phones will be compatible with the vehicle's Bluetooth® system. Bluetooth® is a registered trademark of Bluetooth SIG. †Fuel consumption figures are based on ADR81/02 test results. They are useful in comparing the fuel consumption of different vehicles. They may not be the fuel consumption achieved in practice. This will depend on traffic and road conditions and how the vehicle is driven. **E10 Compatible. ***Wireless charging compatible with phones featuring Qi technology or adapter. ^^Subject to State regulations and towbar design. †Leather appointed seats may comprise of genuine leather, polyurethane and other man-made materials or a combination thereof. †MPI - Multi-Point Injection. †D-CVVT - Dual Continuous Variable Valve Timing. †T-GDI - Turbo Gasoline Direct Injection. †MDPS - Motor-Driven Power Steering. †DMS - Drive Mode Select. †EBD - Electronic Brakeforce Distribution. †BA - Brake Assist. †TCS - Traction Control System. †Safety technologies are supplemental systems and do not replace the need for the driver to exercise care and attention. **BSD and RCTA technologies standard on Sport+ model from October 2018 production.